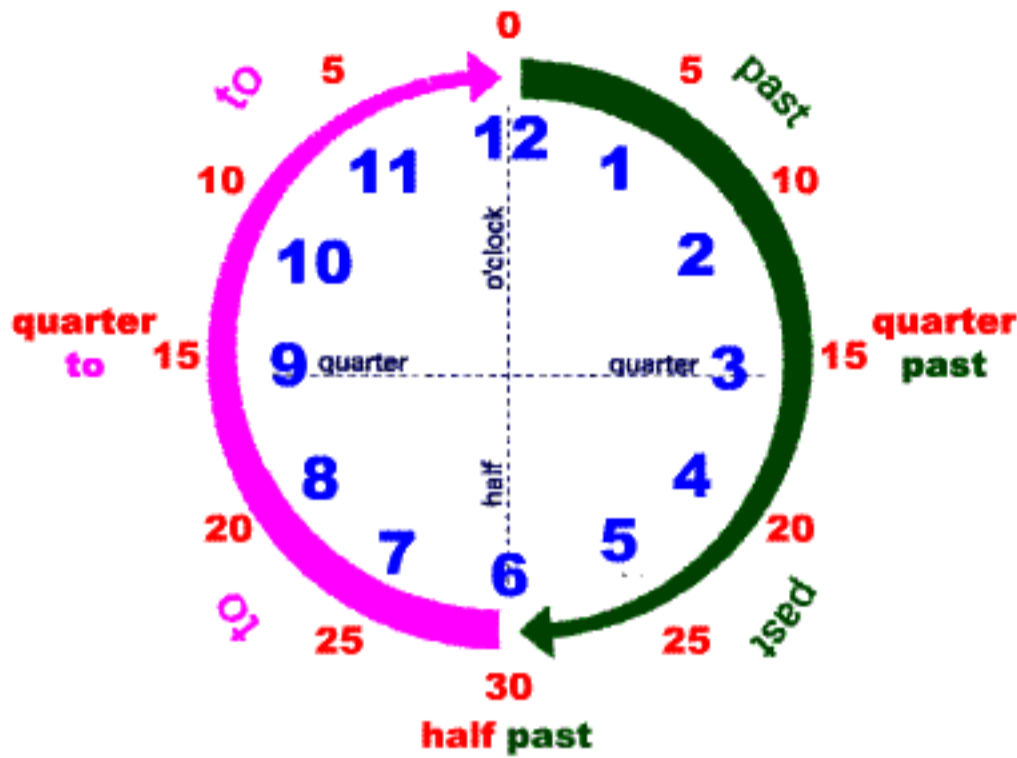


WHAT'S THE TIME?



The short hand shows the hours.

The long hand shows the minutes.

half an hour
= 30 minutes

half half

quarter of an hour
= 15 minutes

quarter quarter
quarter quarter

11:00



It's **eleven** o'clock.

11:10



It's **ten past eleven**.

11:15



It's **quarter past eleven**.

11:30



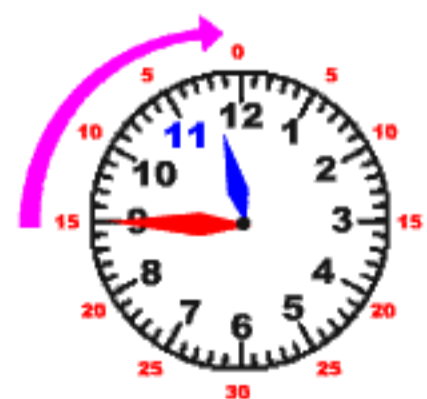
It's **half past eleven**.

11:40



It's **twenty to twelve**.

11:45



It's **quarter to twelve**.

WHAT'S THE TIME?

o'clock

We use *o'clock* at the full hour.

It's three o'clock.



It's six o'clock.



It's twelve o'clock.

past

We use *past* to say times after the hour.

It's ten past eleven.



It's quarter past seven.



It's half past nine.

to

We use *to* to say times before the hour.

It's twenty to nine.



It's quarter to eleven.



It's ten to ten.

What's the time?

I CAN SAY

It's six o'clock.

It's half past six.

It's ten to seven.

It's quarter past seven.

